

Cello Concerto

2nd Movement

♩ = 124 8 **A** pizz. mp

11

14

17

20

23 **B** mf

26

29

32 **C** Più mosso ♩ = 150 4

Violoncello Solo

38 **D** arco
mp 3 3 3

41 3 3 3 3

45 **E** 10

58 **F**
mp 3 3 3 5 5 6 3 3 3 5

61 5 5 5 5 5

64 6 6 3 5 *p* 3 3 3

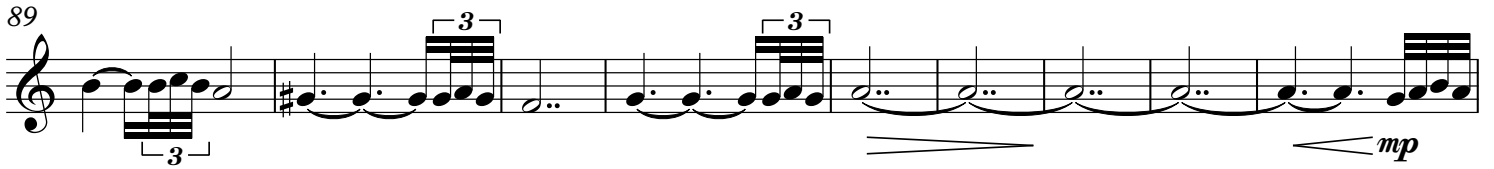
67 *mp* 3 3 5

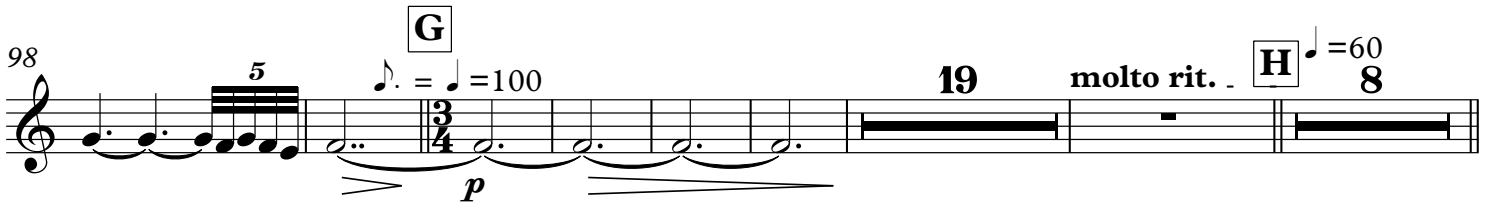
70 3 5 3 5

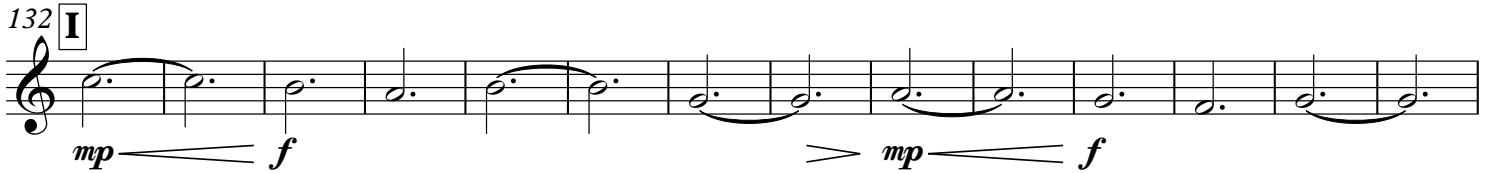
73 5 6

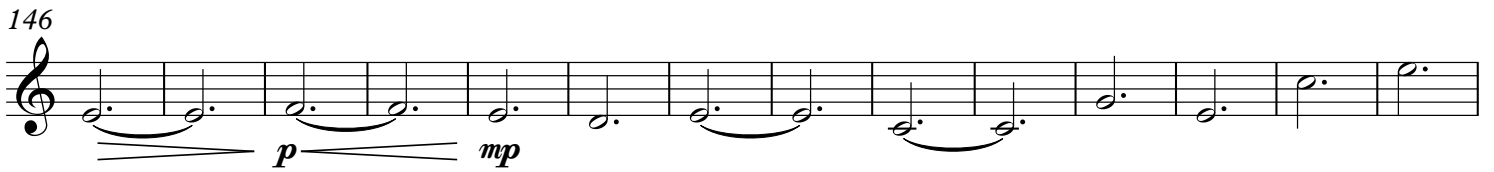
79 *ppp*
mp

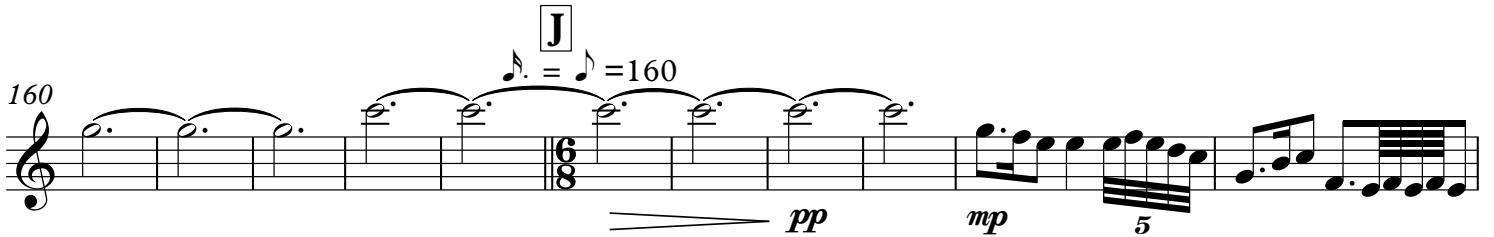
Violoncello Solo

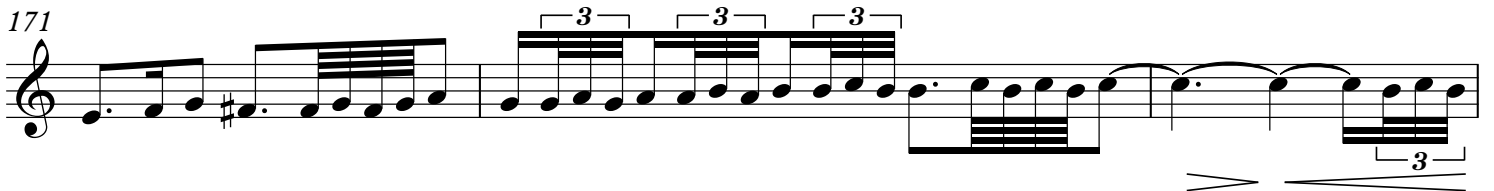
89 

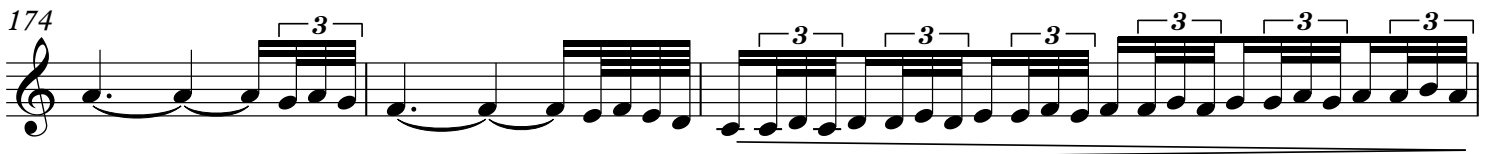
98 

132 

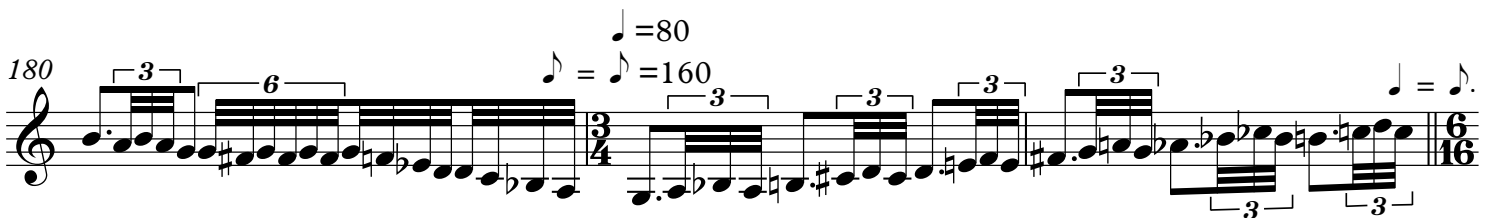
146 

160 

171 

174 

177 

180 

Violoncello Solo

183 **K** $\text{♩} = 80$

186

189

192 **11** *mp*

206 *mf* 3 *mf* 3 *mf* 3

209

212

215

218 9 9 9

221 9 9 9 **2**

Violoncello Solo

225 **L** *mf* 9 *mp* I II

229 III II I II

232 I

235

238 I II III

241 II III IV

244 III IV

247 III IV

250 3 3 3 3 9 *p*

263 **M**
2
mp

268

271 **N**
ff

274
ff

277

280 **O**
ff

283

286

289
ff

292

Violoncello Solo

295

298

301

304

307

310

313

316

319

322

ff

ff

ff

ff

P

4

329 **Q**

ff

333

337

340

344

347

351 **R**

354

357

ffff

405 **T**

pp

Musical notation for measures 405-410, starting with a treble clef and a **T** box. The music consists of a single melodic line with various accidentals and dynamics.

421 **U**

mp

Musical notation for measures 421-426, starting with a treble clef and a **U** box. It features a complex rhythmic pattern with triplets and a dynamic of *mp*.

427

Musical notation for measures 427-432, starting with a bass clef. It features a complex rhythmic pattern with triplets and a dynamic of *mp*.

433

mf

Musical notation for measures 433-437, starting with a treble clef. It features a complex rhythmic pattern with triplets and a dynamic of *mf*.

438

Musical notation for measures 438-439, starting with a treble clef. It features a complex rhythmic pattern with a 9-measure rest and a dynamic of *mf*.

440

Musical notation for measures 440-442, starting with a treble clef. It features a complex rhythmic pattern with triplets and a dynamic of *mf*.

443

Musical notation for measures 443-447, starting with a treble clef. It features a complex rhythmic pattern with triplets and a dynamic of *mf*.

448

Musical notation for measures 448-452, starting with a treble clef. It features a complex rhythmic pattern with triplets and a dynamic of *mf*.

453 **V**

mp *p*

Musical notation for measures 453-457, starting with a bass clef and a **V** box. It features a complex rhythmic pattern with a dynamic of *mp* and *p*.

468



474



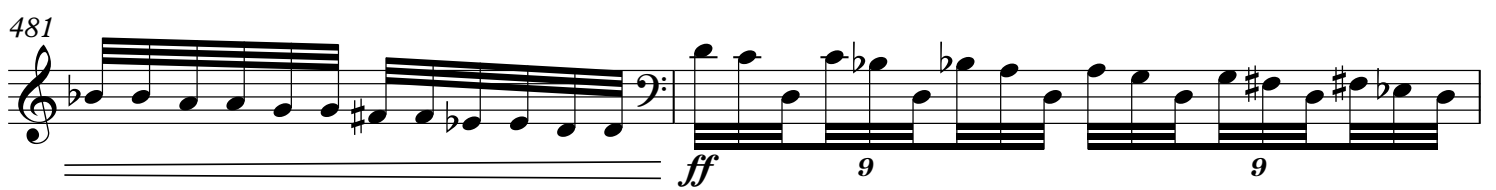
477



479



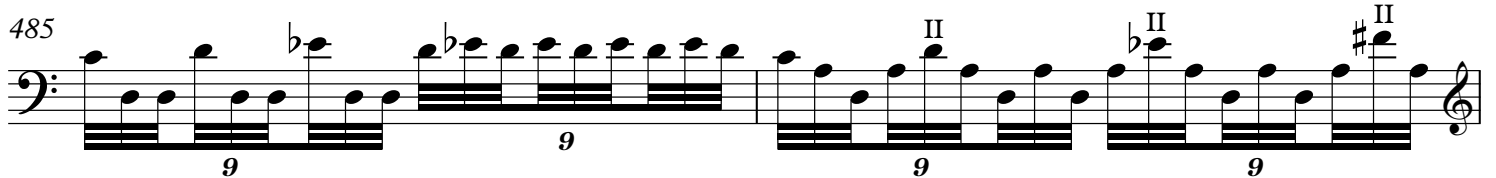
481



483



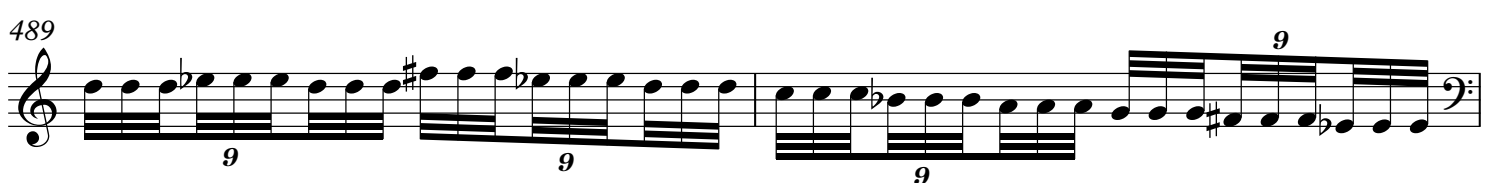
485



487



489



491

9 9 9 9

W

493

fff > *mp*

505

X

517

528

537

4 8 8 8

Y

565

ffff > *f* > *mf* *ffff* > *f* > *mf* *ffff* > *f* > *mf*

Z

577

ffff > *f* *ffff*

597

8 8 8